

One World Hotel Supplies

World-class tableware

# Hotel Ware

Eden Shape



Chop Plate - 0325  
Ave. Diameter - 310 mm  
Ave. Weight - 1034 g



Dinner Plate - 0320  
Ave. Diameter - 273 mm  
Ave. Weight - 688 g



Meat Plate - 0315  
Ave. Diameter - 237 mm  
Ave. Weight - 473 g



Salad Plate - 0311  
Ave. Diameter - 215 mm  
Ave. Weight - 375 g



Soup Plate - 0310  
Ave. Diameter - 228 mm  
Ave. Weight - 455 g



B & B Plate - 0312  
Ave. Diameter - 165 mm  
Ave. Weight - 200 g



Tea Cup & Saucer - 0389/0387  
Cup Ave. Vol. - 260 ml  
Ave. Weight - 390 g



Tea Cup & Saucer - 4589/4587  
Cup Ave. Vol. - 170 ml  
Ave. Weight - 280 g



Coffee Cup & Saucer - 4592/4593  
Cup Ave. Vol. - 90 ml  
Ave. Weight - 180 g



Rice Bowl (Small) - 0150  
Ave. Diameter - 116 mm  
Ave. Wht. & Vol. - 213 g & 278 ml



Rice Bowl (Large) - 0250  
Ave. Diameter - 144 mm  
Ave. Wht. & Vol. - 345 g & 610 ml



Soup Cup & Setter - 0398/0277  
Cup Ave. Vol. - 325 ml  
Ave. Weight - 530 g

One world Hotel supplies

World-class tableware

# Hotel Ware

Eden Shape



*Fruit Nappy - 0306*  
Ave. Diameter - 145 mm  
Ave. Weight - 200 g



*Cereal Bowl - 0307*  
Ave. Diameter - 190 mm  
Ave. Weight - 340 g



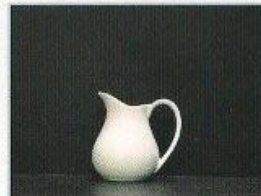
*Large Salad Bowl - 0309*  
Ave. Diameter - 230 mm  
Ave. Weight - 680 g



*Tea Pot - 0223*  
Ave. Vol. - 510 ml  
Ave. Weight - 340 g



*Sugar Sachet Holder - 0127*  
Ave. Vol. - 213 ml  
Ave. Weight - 157 g



*Creamer - 0128*  
Ave. Vol. - 141 ml  
Ave. Weight - 135 g



*Soup Cup W/out H - 039B/0277*  
Cup Ave. Vol. - 325 ml  
Ave. Weight - 532 g



*12" Oval PLatter - 4545*  
Ave. Diameter - 300 mm  
Ave. Weight - 760 g



*14" Oval PLatter - 4544*  
Ave. Diameter - 350 mm  
Ave. Weight - 1220 g



One world Hotel Supplies

World-class tableware

# Hotel Ware

Opus Shape



Chop Plate - 7325  
Ave. Diameter - 306 mm  
Ave. Weight - 1020 g



Dinner Plate - 7320  
Ave. Diameter - 285 mm  
Ave. Weight - 810 g



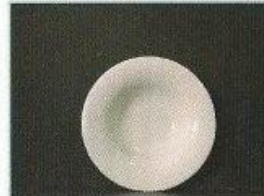
Salad Plate - 7311  
Ave. Diameter - 220 mm  
Ave. Weight - 450 g



B & B Plate - 7312  
Ave. Diameter - 182 mm  
Ave. Weight - 320 g



Dinner Plate Small - 7315  
Ave. Diameter - 260 mm  
Ave. Weight - 670 g



Soup Plate - 7310  
Ave. Diameter - 240 mm  
Ave. Weight - 550 g



Pasta Bowl - 7376  
Ave. Diameter - 307 mm  
Ave. Weight - 1050 g



Tea Pot Large - 7323  
Ave. Vol. - 1000 ml  
Ave. Weight - 570 g



Tea Pot Small - 7324  
Ave. Vol. - 500 ml  
Ave. Weight - 355 g



Creamer - 7328  
Ave. Vol. - 320 ml  
Ave. Weight - 230 g



Sugar Bowl - 7327  
Ave. Vol. - 300 ml  
Ave. Weight - 260 g



Stackable Cup & Sau - 7399/7387  
Ave. Vol. - 240 ml  
Ave. Weight - 472 g

One World Hotel supplies

World-class tableware

# Hotel Ware

Opus Shape



*Breakfast Cup & Sau - 7379/7377*  
Ave. Vol. - 360 ml  
Ave. Weight - 572 g



*Non-stackable C & S - 7389/7387*  
Ave. Vol. - 205 ml  
Ave. Weight - 460 g



*Demi Cup & Sau - 7392/7393*  
Ave. Vol. - 90 ml  
Ave. Weight - 220 g



*Non-stackable Bowl - 7350*  
Ave. Vol. - 750 ml  
Ave. Weight - 435 g



*Stackable Bowl - 7398*  
Ave. Vol. - 570 ml  
Ave. Weight - 400 g



*Gratin Dish (S) - 7334*  
Ave. Diameter - 245 x 114 mm  
Ave. Weight - 445 g



*Gratin Dish (M) - 7336*  
Ave. Diameter - 308 x 137 mm  
Ave. Weight - 740 g



*Gratin Dish (L) - 7338*  
Ave. Diameter - 367 x 160 mm  
Ave. Weight - 960 g

One World Hotel Supplies

World-class tableware

# Hotel Ware

Purity Shape



Chop Plate - 3625  
Ave. Diameter - 300 mm  
Ave. Weight - 860 g



Dinner Plate - 3620  
Ave. Diameter - 266 mm  
Ave. Weight - 632 g



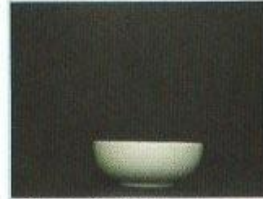
Salad Plate - 3611  
Ave. Diameter - 206 mm  
Ave. Weight - 350 g



B & B Plate - 3612  
Ave. Diameter - 163 mm  
Ave. Weight - 204 g



Coup Soup Plate - 3608  
Ave. Diameter - 215 mm  
Ave. Weight - 453 g



Rice Bowl - 3650  
Ave. Diameter - 165 mm  
Ave. Weight - 450 g



Tea Cup & Sau - 3689/3687  
Cup Ave. Vol. - 300 ml  
Ave. Weight - 340 g



Coffee Cup & Sau - 3692/3693  
Cup Ave. Vol. - 109 ml  
Ave. Weight - 202 g



Coffee Pot - 3653  
Ave. Vol. - 2250 ml  
Ave. Weight - 1190 g



Tea Pot - 3623  
Ave. Vol. - 1380 ml  
Ave. Weight - 690 g



Sugar Bowl - 3627  
Ave. Vol. - 350 ml  
Ave. Weight - 240 g



Creamer - 3628  
Ave. Vol. - 280 ml  
Ave. Weight - 187 g



One World Hotel supplies

World-class tableware

# Hotel Ware

Purity Shape



*Baker - 3638  
Ave. Vol. & Dia. - 1600 ml & 262 mm  
Ave. Weight - 845 g*



*Large Salad Bowl - 3609  
Ave. Vol. & Dia. - 2652 ml & 237 mm  
Ave. Weight - 1066 g*



*Gravy Boat & Saucer - 3642/3641  
Ave. Vol. & Dia. - 500 ml & 183 mm  
Ave. Weight - 590 g*



*Vinegar & Oil Bottle - 3661/3662  
Ave. Vol. - 175 ml & 205 ml*



*Pepper & Salt Shaker - 3601/02  
Ave. Weight - 80 g & 84 g*

One World Hotel Supplies

World-class tableware

# Hotel Ware

Vessel Shape



Chop Plate - 4125  
Ave. Diameter - 308 mm  
Ave. Weight - 864 g



Dinner Plate - 4120  
Ave. Diameter - 262 mm  
Ave. Weight - 639 g



Rim Soup Plate - 4110  
Ave. Diameter - 215 mm  
Ave. Weight - 432 g



Salad Plate - 4111  
Ave. Diameter - 216 mm  
Ave. Weight - 357 g



B & B Plate - 4112  
Ave. Diameter - 178 mm  
Ave. Weight - 242 g



Breakfast Cup & Sau - 4179/77  
Cup Ave. Vol - 385 ml  
Ave. Weight - 461 g



Tea Cup & Saucer - 4189/87  
Cup Ave. Vol - 265 ml  
Ave. Weight - 368 g



Coffee Cup & Sau - 4192/93  
Cup Ave. Vol. - 95 ml  
Ave. Weight - 200 g



Demi Cup & Sau - 4182/83  
Cup Ave. Vol. - 130 ml  
Ave. Weight - 260 g



Mug - 4188  
Ave. Diameter - 84.5 mm  
Ave. Wht & Vol - 300g & 385ml



Tea Pot - 4123  
Ave. Diameter - 94.5 mm  
Ave. Wht. & Vol. - 770 g & 1140 ml



Coffee Pot - 4123  
Ave. Diameter - 85.1 mm  
Ave. Wht & Vol - 794g & 1240ml

One World Hotel Supplies

World-class tableware

# Hotel Ware

Vessel Shape



*Creamer - 4128*  
Ave. Diameter - 43.1 mm  
Ave. Wht & Vol - 225g & 260ml



*Sugar Bowl - 4127*  
Ave. Diameter - 76.6 mm  
Ave. Wht. & Vol. - 250.9g & 290ml



*Fruit Nappy - 4106*  
Ave. Diameter - 163 mm  
Ave. Weight - 210 g



*Biscuit Jar - 4164*  
Ave Volume - 1975 ml  
Ave Weight - 1023 g



*Sugar Can - 4163*  
Ave. Volume - 988 ml  
Ave. Weight - 595 g



*Herbal Oil Dish - 4154*  
Ave. Diameter - 106.1 mm  
Ave. Weight - 77 g



*Oval Platter - 4143*  
Ave. Diameter - 402 mm  
Ave Weight - 1326 g



*Oval Platter - 4144*  
Ave. Diameter - 355.8 mm  
Ave. Weight - 966 g



*Oval Platter - 4145*  
Ave. Diameter - 319 mm  
Ave. Weight - 720 g



*Covered Vegetable Bowl - 4129*  
Ave. Volume - 2120 ml  
Ave. Weight - 1636 g



*Large Salad Bowl - 4109*  
Ave Volume - 2310 ml  
Ave Weight - 1167 g



*Cereal Bowl - 4107*  
Ave. Volume - 740 ml  
Ave. Weight - 486 g



One World Hotel supplies

World-class tableware

# Hotel Ware

Vessel Shape



Oil Bottle - 4162  
Ave. Weight - 301 g  
Ave Vol & Hei - 385ml / 217mm



Vinegar Bottle - 4161  
Ave. Weight - 288 g  
Ave Vol & Hei - 370ml / 192mm



Milk Pitcher - 4151  
Ave. Volume - 650 ml  
Ave. Weight - 313 g



Saucer & Setter - 4142/4141  
Ave. Weight - 647.8 g  
Ave Vol & Hei - 550ml / 111 mm



Pepper Pot - 4101  
Ave. Height - 113 mm  
Ave Weight - 127 g



Salt Pot - 4102  
Ave. Height - 93 mm  
Ave Weight - 118 g



Candle Holder - 4104  
Ave. Diameter - 54.6 mm  
Ave Weight - 209 g



Rectangular Tray - 4149  
Ave. Volume - 3350 ml  
Ave Weight - 2140 g



Vase - 4137  
Ave. Height - 133 mm  
Ave Weight - 176 g

One World Hotel Supplies

World-class tableware

# Hotel Ware

Room & Table Accessories



Tea Pot - 2723  
Ave. Vol - 410 ml  
Ave Weight - 264 g



Tea Pot - 4523  
Ave. Vol - 336 ml  
Ave Weight - 305 g



Sugar Bowl - 1927  
Ave. Vol. - 225 ml  
Ave. Weight - 177 g



Tea Pot - 1923  
Ave. Vol - 605 ml  
Ave Weight - 485 g



Tea Pot - 1953  
Ave. Vol. - 970 ml  
Ave. Weight - 625 g



Tea Pot - 0323  
Ave. Vol - 536 ml  
Ave Weight - 380 g



Creamer (Square) - 4828  
Ave. Vol. - 115 ml  
Ave. Weight - 100 g



Sugar Bowl (Square) - 4827  
Ave. Vol. - 175 ml  
Ave. Weight - 200 g



Tea Pot (Square) - 4823  
Ave. Vol. - 430 ml  
Ave. Weight - 280 g



Creamer - 1928  
Ave. Vol. - 207 ml  
Ave. Weight - 140 g



Soup Spoon - 221  
Ave. Weight - 55 g



Soup Spoon - 3021  
Ave. Weight - 38 g

One World Hotel supplies

World-class tableware

# Hotel Ware

Room & Table Accessories



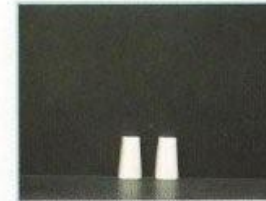
Cova Cup - 0182  
Ave. Vol. - 77 ml  
Ave. Weight - 55 g



Cake Tray - 0904  
Ave. Diameter - 303 mm  
Ave. Weight - 1040 g



Cake Server - 0121  
Ave. Weight - 144 g



Pepper & Salt - 0101/0102  
Ave. Height - 44.5 mm



Pepper & Salt - 0601/0602  
Ave. Height - 100 mm



Sugar Bowl - 1927  
Ave. Vol. - 225 ml  
Ave. Weight - 177 g



Ash Tray (Square) - 0518  
Ave. Weight - 201 g



Ash Tray - 1918  
Ave. Weight - 274.7 g



Ash Tray - 418  
Ave. Weight - 42 g



Candle Holder - 1704  
Ave. Weight - 117 g



Toothpick Holder - 0104  
Ave. Height - 50.1 mm  
Ave. Weight - 71 g



Toothpick Holder - 1904  
Ave. Height - 61.9 mm  
Ave. Weight - 70 g



1-World hotel Supplies

World-class tableware

# Hotel Ware

Room & Table Accessories



*Bud Vase - 0437*  
Ave. Height - 120.6 mm  
Ave. Weight - 202 g



*Bottle Vase - 0337*  
Ave. Height - 134.6 mm  
Ave. Weight - 222 g



*Flared Dish 2.5" - 0154*  
Ave. Diameter - 42.2 mm  
Ave. Weight - 68 g



*Egg Cup (Tall) - 0135*  
Ave. Height - 69 mm  
Ave. Weight - 72 g



*Egg Cup (Small) - 1903*  
Ave. Height - 62 mm  
Ave. Weight - 68 g



*Napkin Ring - 0804*  
Ave. Weight - 42 g

One World Hotel Supplies

World-class tableware

# Hotel Ware

Simplicity Shape



Chop Plate - 7225  
Ave. Diameter - 305 mm  
Ave. Weight - 952 g



Dinner Plate - 7220  
Ave. Diameter - 274 mm  
Ave. Weight - 680 g



Salad Plate - 7211  
Ave. Diameter - 213 mm  
Ave. Weight - 360 g



B & B Plate - 7212  
Ave. Diameter - 163 mm  
Ave. Weight - 200 g



Tea Cup & Sau (L) - 3389/7287  
Cup Ave. Vol. - 253 ml  
Ave. Weight - 336 g



Coffee Cup & Sau - 3392/7293  
Cup Ave. Vol. - 110 ml  
Ave. Weight - 198 g



Tea Cup & Sau (M) - 3399/7297  
Cup Ave. Vol. - 255 ml  
Ave. Weight - 336 g



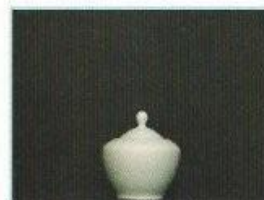
Soup Cup - 3398  
Cup Ave Vol - 410ml  
Ave Weight - 255 g



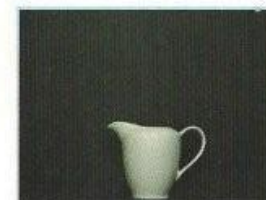
14" Oval Platter - 7244  
Ave. Diameter - 350 mm  
Ave. Weight - 1207 g



Tea Pot - 3323  
Ave. Vol. - 1211 ml  
Ave. Weight - 680 g



Sugar Bowl - 3327  
Ave. Vol. - 340 ml  
Ave. Weight - 33 g



Creamer - 3328  
Ave. Vol. - 258 ml  
Ave. Weight - 180 g

One World Hotel supplies

World-class tableware

# Hotel Ware

Simplicity Shape



Large Salad Bowl - 7209  
Ave. Diameter - 232 mm  
Ave. Weight - 720 g



Cereal Bowl - 7207  
Ave. Diameter - 189 mm  
Ave. Weight - 365 g



Fruit Nappy - 7206  
Ave. Diameter - 143 mm  
Ave. Weight - 190 g



One world Hotel Supplies

World-class tableware

# Hotel Ware

Vessel Shape



Chop Plate - 4125  
Ave. Diameter - 308 mm  
Ave. Weight - 864 g



Dinner Plate - 4120  
Ave. Diameter - 262 mm  
Ave. Weight - 639 g



Rim Soup Plate - 4110  
Ave. Diameter - 215 mm  
Ave. Weight - 432 g



Salad Plate - 4111  
Ave. Diameter - 216 mm  
Ave. Weight - 357 g



B & B Plate - 4112  
Ave. Diameter - 178 mm  
Ave. Weight - 242 g



Breakfast Cup & Sau - 4179/77  
Cup Ave. Vol - 385 ml  
Ave. Weight - 461 g



Tea Cup & Saucer - 4189/87  
Cup Ave. Vol - 265 ml  
Ave. Weight - 368 g



Coffee Cup & Sau - 4192/93  
Cup Ave. Vol. - 95 ml  
Ave. Weight - 200 g



Demi Cup & Sau - 4182/83  
Cup Ave. Vol. - 130 ml  
Ave. Weight - 260 g



Mug - 4188  
Ave. Diameter - 84.5 mm  
Ave. Wht & Vol - 300g & 385ml



Tea Pot - 4123  
Ave. Diameter - 94.5 mm  
Ave. Wht. & Vol. - 770 g & 1140 ml



Coffee Pot - 4123  
Ave. Diameter - 85.1mm  
Ave. Wht & Vol - 794g & 1240ml

## World class masterpieces

**Body** made mostly from the finest imported raw materials sourced worldwide

**Made** in the most technologically advanced factory in Sri Lanka

**Shapes** designed by European designers

**Food** safety assured as decorations conform to USA's Food & Drug Administration (FDA) standards

**Colour** pigments of prime quality

**High** whiteness

**Hard** chip-resistant body fired at 1320<sup>o</sup> C

**Scratch** resistant surface

**Zero** water absorption and bacteria free

**24-carat** genuine gold in gold decorations

**Pure** platinum in platinum decorations







































